



## Welcome to the FSSE Webinar - Using FSSE and NSSE Data: An Overview of Existing Tools and Reports

**We will begin at 3 pm EDST.**

### Before we begin, please review the following:

- ▶ Download and print the presentation PDF from the NSSE Web site: <http://nsse.iub.edu/webinars/archives.cfm>.
- ▶ Please turn up your computer speakers or plug in your headphones to listen to the presentation.
- ▶ Please close all other applications as they may interfere with the audio feed for this Webinar.
- ▶ If you cannot hear anything, click on "Meeting" in left of dark grey tool bar at the top of the screen and select "Audio Setup Wizard". Complete the first part of the Wizard, which ends with a speaker test, in order to ensure you are properly connected for webinar audio. If you cannot hear anything after this, please consult your technology support person.
- ▶ The Chat window will be available throughout the presentation so that you can interact with participants. You will be able to use the chat window to submit questions to the presenter during the Q & A session.

---

---

---

---

---

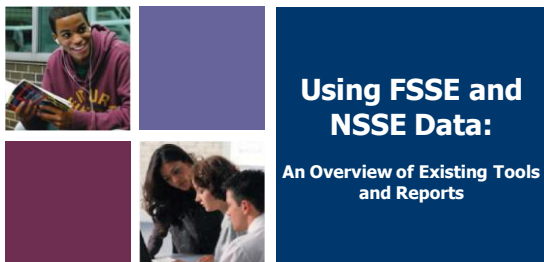
---

---

---

---

---



**Amy Garver and Mahauganee Shaw**  
FSSE Project Associates  
Indiana University Center for Postsecondary Research

---

---

---

---

---

---

---

---

---

---



## Webinar Overview



- ▶ Faculty Survey of Student Engagement (FSSE)
- ▶ FSSE Reports
- ▶ Words of Caution
- ▶ Website Tools and Reports
- ▶ Questions are welcome!

---

---

---

---

---

---

---

---

---

---

### Overview: Surveys



- ▶ Faculty Survey of Student Engagement (FSSE)
  - Parallel survey designed to measure faculty expectations for student engagement in educational practices that are known to be empirically linked with high levels of learning and development
- ▶ National Survey of Student Engagement (NSSE)
  - Annual survey of first-year students and seniors at four-year institutions that measures students' participation in educational experiences that prior research has connected to valued outcomes

---

---

---

---

---

---

---

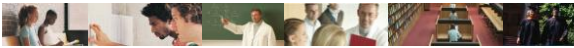
---

---

---

### Overview: Survey Items

- ▶ Faculty perceptions of how often their students engage in different activities
- ▶ The importance faculty place on various areas of learning and development
- ▶ The nature and frequency of interactions faculty have with students
- ▶ How faculty members organize class time




---

---

---

---

---

---

---

---

---

---

### Overview: History

- ▶ First national administration in 2003
- ▶ Over 120,000 faculty responding from 530 different institutions since 2003
- ▶ 23,385 faculty respondents from 160 institutions in 2008
- ▶ Average institutional response rate of about 50% each year

---

---

---

---

---

---

---

---

---

---






---

---

---

---

---

---

---

---



### FSSE Reports

- ▶ Respondent Characteristics Report
- ▶ Frequency Report
- ▶ NSSE-FSSE Combined Report
- ▶ View [sample reports](#)

---

---

---

---

---

---

---

---



### FSSE Reports

**Respondent Characteristics Table (RCT)**

- ▶ Provides a snapshot of how well faculty respondents match to submitted population file
- ▶ To ensure anonymity, data are reported in the aggregate form
- ▶ Demographics variables are not returned in SPSS data file (e.g. rank, tenure status, employment status, gender, race/ethnicity)

---

---

---

---

---

---

---

---









## Creating FSSE/NSSE Data Displays

Ways we have reported FSSE and NSSE results in

- Annual reports
- FSSE Overview
- Conference presentations
- Research papers

Insert your school's results where you see FSSE national results

---

---

---

---

---

---

---

---

---

---



## Website Tools

### FSSE Selected Results

[http://fsse.iub.edu/html/FSSE\\_selected\\_results.cfm](http://fsse.iub.edu/html/FSSE_selected_results.cfm)

- Data displays by topic area
  - ★ Faculty time
  - ★ Teaching practices
  - ★ Student-Faculty expectations
  - ★ Classroom practices
- Downloadable syntax to easily produce data displays

---

---

---

---

---

---

---

---

---

---



## Website Tools

### FSSE Selected Results – Example

About NSSE News NSSE FSSE ICSSE Related Projects Reports and Services NSSE Archives Participants NSSE Institute Papers & Presentations Institution Interface Order Materials	<h4>FSSE Selected Results</h4> <p>2008   2007   2006</p> <p>FSSE Selected Results describe interesting findings from FSSE and provide examples of how institution-based data users can showcase their own FSSE findings in order to initiate conversations about student engagement on their campuses.</p> <p>By downloading SPSS syntax available with each selected result, schools can easily reproduce the illustrations featured below and compare their findings to faculty trends at the national level. Each link provides a visual representation of the data accompanied by an explanation of the result. Additional examples are available for previous FSSE years in the <a href="#">FSSE Archives</a>.</p> <p style="text-align: center;"><b>2007</b></p> <p><b>Faculty Time</b>  <a href="#">Time spent on teaching, research, &amp; other activities</a>  <a href="#">Class time allocated to teaching activities</a></p> <p><b>Comparing NSSE FSSE Results</b>  <a href="#">Student-Faculty Expectations: Hours per week students spend preparing for class</a>  <a href="#">Campus Environment: Perceived high quality student relationships of others on campus</a>  <a href="#">Classroom Practices: Student participation in selected learning tasks</a></p>
--	--

---

---

---

---

---

---

---

---

---

---



 **For More Information...**

- ▶ Email: [agarver@indiana.edu](mailto:agarver@indiana.edu)  
[shawmd@indiana.edu](mailto:shawmd@indiana.edu)
- ▶ Phone: (812) 856-5824
- ▶ FSSE Web site: [www.fsse.iub.edu](http://www.fsse.iub.edu)
- ▶ NSSE Web site: [www.nsse.iub.edu](http://www.nsse.iub.edu)

Copies of papers and presentations as well as annual reports  
and other information are available through the Web site.

---

---

---

---

---

---

---

---